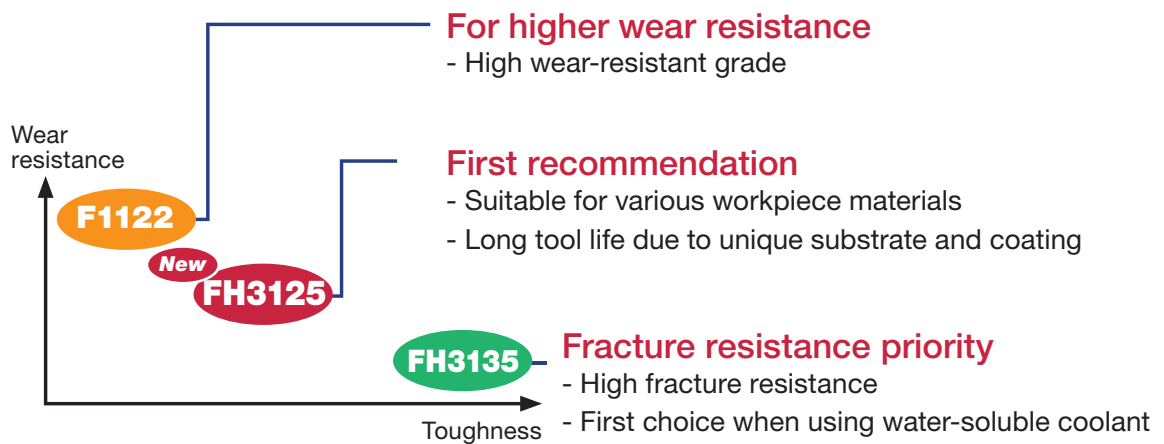
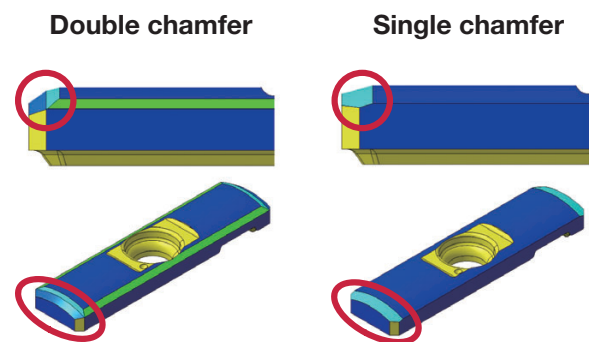
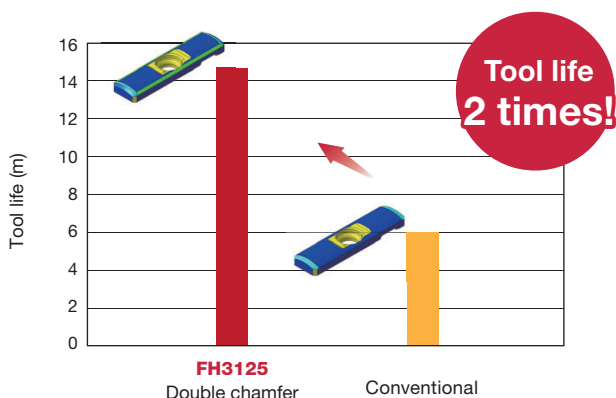


Deep Hole Drilling Tools

Long tool life and high performance are now possible with new combination of **double chamfer & FH3125** grade



CUTTING PERFORMANCE



Advantages:

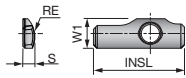
- Promotes smooth entry into the bore
- Reduces the risk of guide pad rupture for extended tool life

P Drill : TRLG20.01X1200-U04
 Workpiece material : SNCM439H
 Cutting speed : $V_c = 100$ m/min
 Feed : $f = 0.15$ mm/rev
 Coolant : Wet

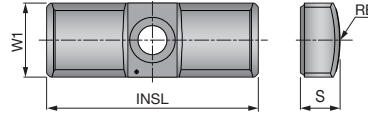
Double chamfer significantly improved fracture resistance and has increased tool life by 2 times more than single chamfer.

CARBIDE GUIDE PADS LINE UP

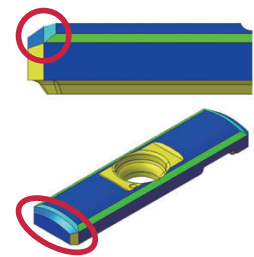
SGP-DC



GP-DC



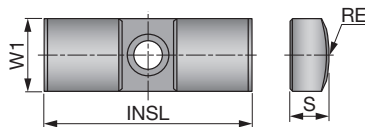
Double chamfer



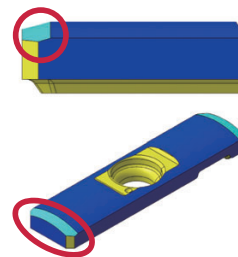
New

Designation	FH3125	FH3135	W1	INSL	S	RE	Drill dia. (mm)							
							DeepTri-Drill		TRI-FINE		FINE-BEAM		UNIDEX	
							1 insert		3 inserts		Min.	Max.	Min.	Max.
						Min.	Max.	Min.	Max.	Min.	Max.	Min.	Max.	
SGP03-12-035-DC	●		3.9	12	1.6	3.5	7.94	8.49	-	-	-	-	-	-
SGP03-12-040-DC	●		3.9	12	1.6	4	8.50	9.99	-	-	-	-	-	-
GP04-16-045-DC	●		4	16	1.8	4.5	10	10.99	-	-	-	-	-	-
GP04-16-050-DC	●		4	16	1.8	5	11	11.99	-	-	-	-	-	-
GP04-16-055-DC	●	●	4	16	2	5.5	12	13.99	-	-	-	-	-	-
GP05-18-060-DC	●	●	5	18	2.5	6	14	15.99	-	-	14	15.99	-	-
GP05-18-075-DC	●	●	5	18	2.5	7.5	16	18	-	-	16	18	-	-
GP06-20-085-DC	●	●	6	20	3	8.5	18.01	21	-	-	18.01	21	-	-
GP06-20-100-DC	●	●	6	20	3	10	21.01	25	-	-	21.01	25	-	-
GP06-20-120-DC	●	●	6	20	3	12	25.01	29.99	28.01	33	25.01	29.99	25	29.99
GP07-20-120-DC	●	●	7	20	3.5	12	30	32	33.01	38	30	39	30	39
GP08-25-155-DC	●	●	8	25	4.5	15.5	-	-	38.01	40	39.01	40	39.01	45
GP10-30-200-DC	●	●	10	30	4.5	20	-	-	-	-	-	-	45.01	57
GP10-35-200-DC	●	●	10	35	6	20	-	-	-	-	-	-	-	45
GP12-35-250-DC	●	●	12	35	5.5	25	-	-	-	-	-	-	57.01	89
GP14-40-250-DC	●	●	14	40	7.5	25	-	-	-	-	-	-	-	60
GP18-40-300-DC	●	●	18	40	9	30	-	-	-	-	-	-	-	99

GP



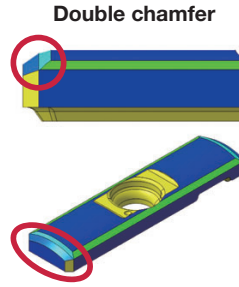
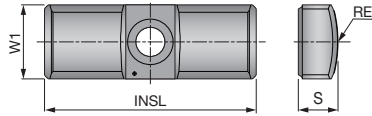
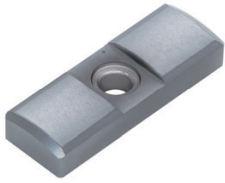
Single chamfer



Drill dia. (mm)

Designation	F1122	W1	INSL	S	RE	Drill dia. (mm)								
						DeepTri-Drill		TRI-FINE		FINE-BEAM		UNIDEX		
						1 insert		3 inserts		Min.	Max.	Min.	Max.	Min.
						Min.	Max.	Min.	Max.	Min.	Max.	Min.	Max.	
GP04-055	●	4	16	2	5.5	12	13.99	-	-	-	-	-	-	-
GP05-060	●	5	18	2.5	6	14	15.99	-	-	14	15.99	-	-	-
GP05-075	●	5	18	2.5	7.5	16	18	-	-	16	18	-	-	-
GP06-085	●	6	20	3	8.5	18.01	21	-	-	18.01	21	-	-	-
GP06-100	●	6	20	3	10	21.01	25	-	-	21.01	25	-	-	-
GP06	●	6	20	3	12	25.01	29.99	28.01	33	25.01	29.99	25	29.99	-
GP07	●	7	20	3.5	12	30	32	33.01	38	30	39	30	39	-
GP08	●	8	25	4.5	15.5	-	-	38.01	40	39.01	40	39.01	45	38
GP10S	●	10	30	4.5	20	-	-	-	-	-	-	45.01	57	-
GP10	●	10	35	6	20	-	-	-	-	-	-	-	-	45
GP12	●	12	35	5.5	25	-	-	-	-	-	-	57.01	65	-
GP14	●	14	40	7.5	25	-	-	-	-	-	-	-	-	60

GP-DC Plus Size



Drill dia. (mm)

Designation	FH3125	W1	INSL	S	RE	Drill dia. (mm)									
						DeepTri-Drill				TRI-FINE		FINE-BEAM		UNIDEX	
						1 insert		3 inserts		Min.	Max.	Min.	Max.	Min.	Max.
Min.	Max.	Min.	Max.												
GP08-25-160-DC+1	●	8	25	5	16	-	-	-	-	-	-	-	-	38	44.99
GP08-25-165-DC+2	●	8	25	5.5	16.5	-	-	-	-	-	-	-	-	38	44.99
GP08-25-170-DC+3	●	8	25	6	17	-	-	-	-	-	-	-	-	38	44.99
GP10-35-205-DC+1	●	10	35	6.5	20.5	-	-	-	-	-	-	-	-	45	59.99
GP10-35-210-DC+2	●	10	35	7	21	-	-	-	-	-	-	-	-	45	59.99
GP10-35-215-DC+3	●	10	35	7.5	21.5	-	-	-	-	-	-	-	-	45	59.99
GP10-35-220-DC+4	●	10	35	8	22	-	-	-	-	-	-	-	-	45	59.99
GP14-40-255-DC+1	●	14	40	8	25.5	-	-	-	-	-	-	-	-	60	98.99
GP14-40-260-DC+2	●	14	40	8.5	26	-	-	-	-	-	-	-	-	60	98.99
GP14-40-265-DC+3	●	14	40	9	26.5	-	-	-	-	-	-	-	-	60	98.99
GP14-40-270-DC+4	●	14	40	9.5	27	-	-	-	-	-	-	-	-	60	98.99
GP14-40-275-DC+5	●	14	40	10	27.5	-	-	-	-	-	-	-	-	60	98.99
GP18-40-305-DC+1	●	18	40	9.5	30.5	-	-	-	-	-	-	-	-	99	293.99
GP18-40-310-DC+2	●	18	40	10	31	-	-	-	-	-	-	-	-	99	293.99
GP18-40-315-DC+3	●	18	40	10.5	31.5	-	-	-	-	-	-	-	-	99	293.99
GP18-40-320-DC+4	●	18	40	11	32	-	-	-	-	-	-	-	-	99	293.99
GP18-40-325-DC+5	●	18	40	11.5	32.5	-	-	-	-	-	-	-	-	99	293.99

*When the guide pads is changed, the peripheral cartridge must also be changed to the matching Plus parts.

●: Line-up

●: New product

Package quantity = 5 pcs.

Guide pad grade and the timing for replacement

Guide pads are subject to wear, like inserts

- The guide pad has two sides.
- Each guide pad can be used on two sides. When the first corner wears out to 70% of the width, reverse the guide pad to use the second side.
- Replace with a new guide pad when the second side wears out.

